

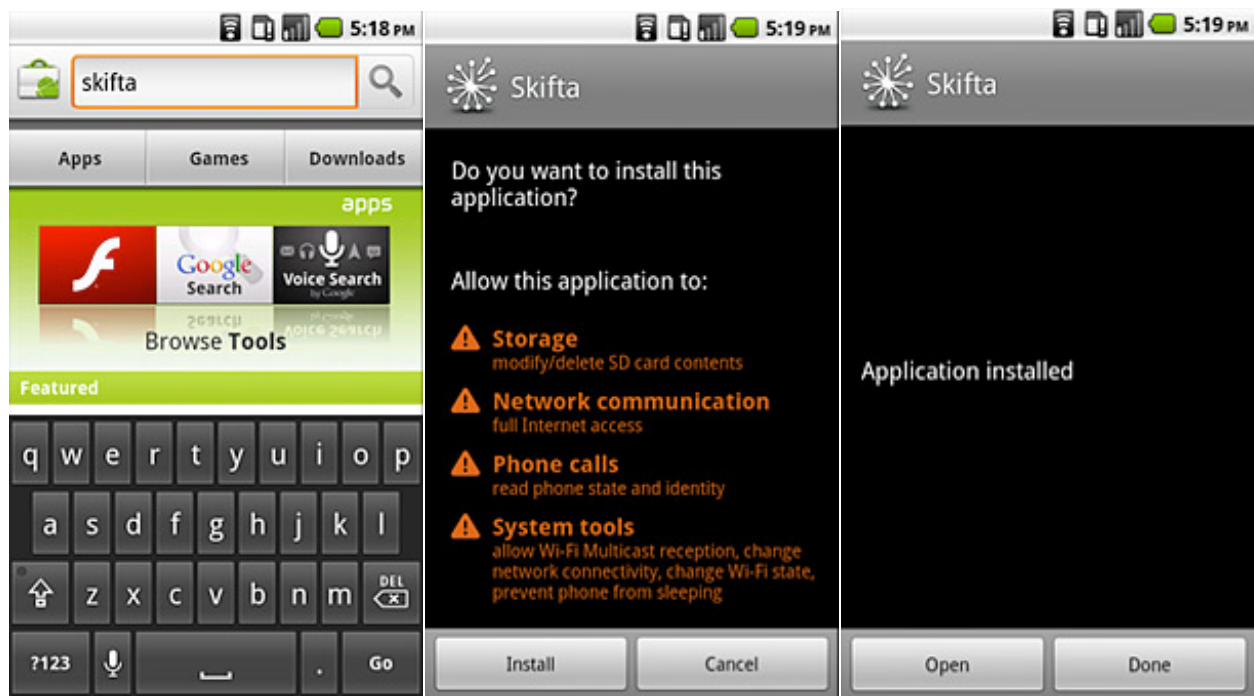
Skifta User Guide

What is Skifta?

Welcome to the Skifta User Guide. The first part will get you going with Skifta and explain what the service and app can do for you. The second part contains some power user tips and tricks and an explanation of app settings.

Downloading the App

Use your Android phone to access the Android Marketplace then search for Skifta. Download and install the application.



Connect to Wi-Fi

Skifta uses your Wi-Fi connection to discover media players and media sources. Before you open Skifta on your phone, connect your phone to a Wi-Fi network. If you try to open Skifta without Wi-Fi, you will be prompted to connect to Wi-Fi before continuing.

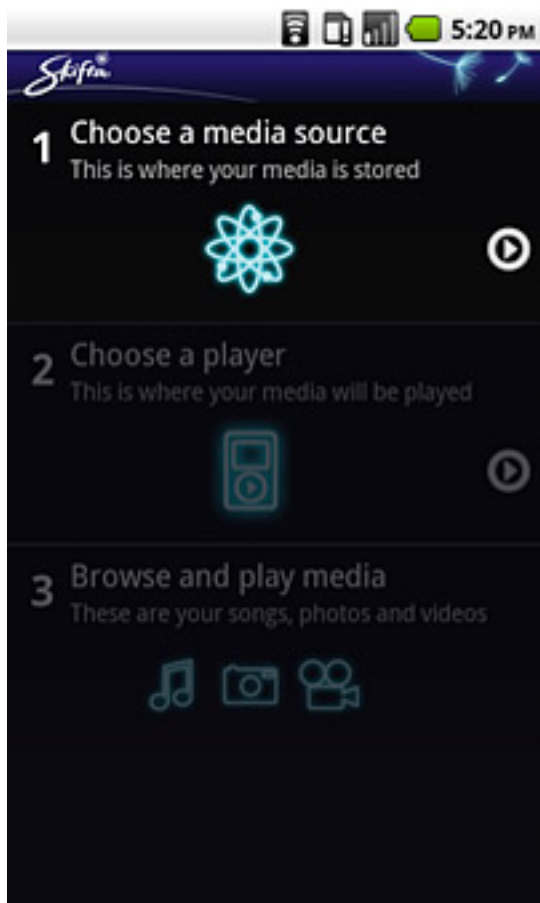
Open the App

On first run of the Skifta app you'll be asked to accept the terms of service. After clicking "Agree", a splash screen appears. The green progress bar indicates the status of the recent updates. The first time you open Skifta it will take between 10-30 seconds to update.



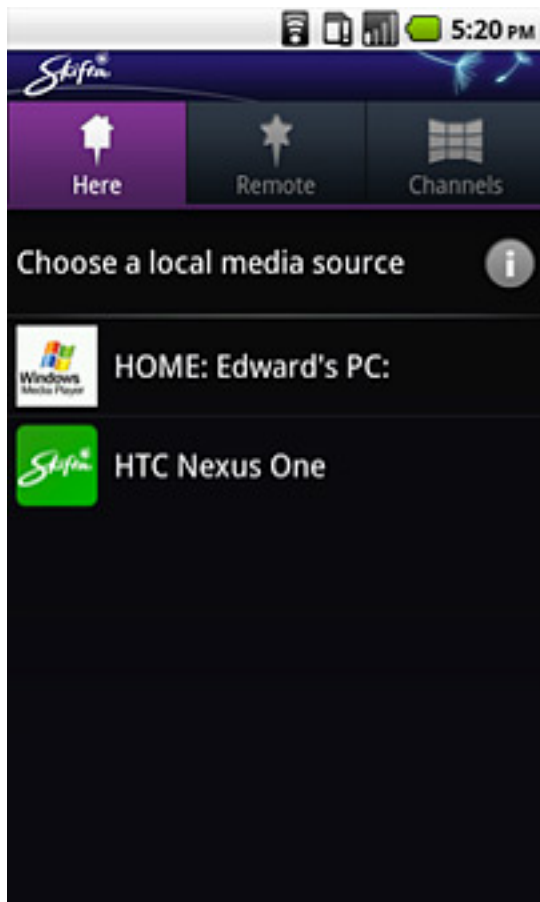
The Home Screen

Once the app is updated you'll see the home screen. Here are the simple 1-2-3 steps to use the app for playing media.



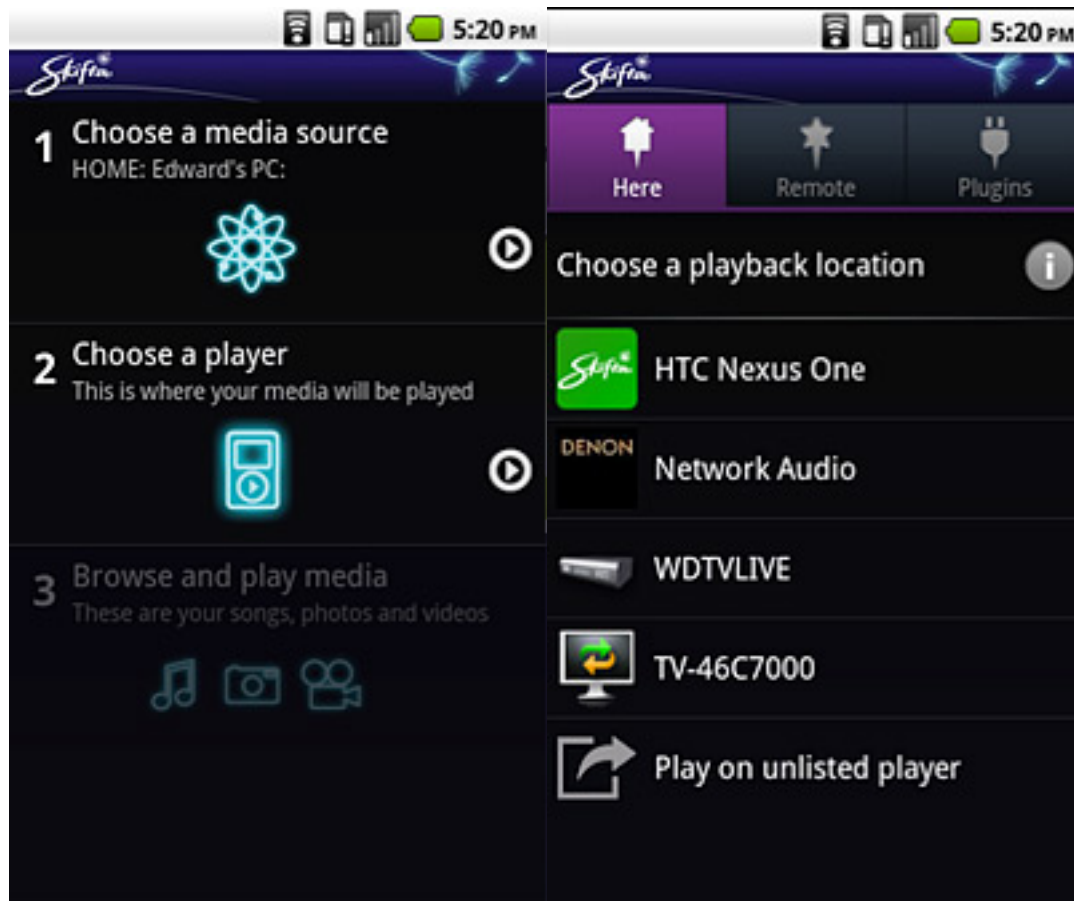
Step 1: Choose a media source

Skifta will automatically discover all the shared media sources on your network. You'll be able to see the phone itself as a media source, and if you have set your Windows Media Player to share media, you'll be able to see that as a source too. Click on any of the available media sources to continue.



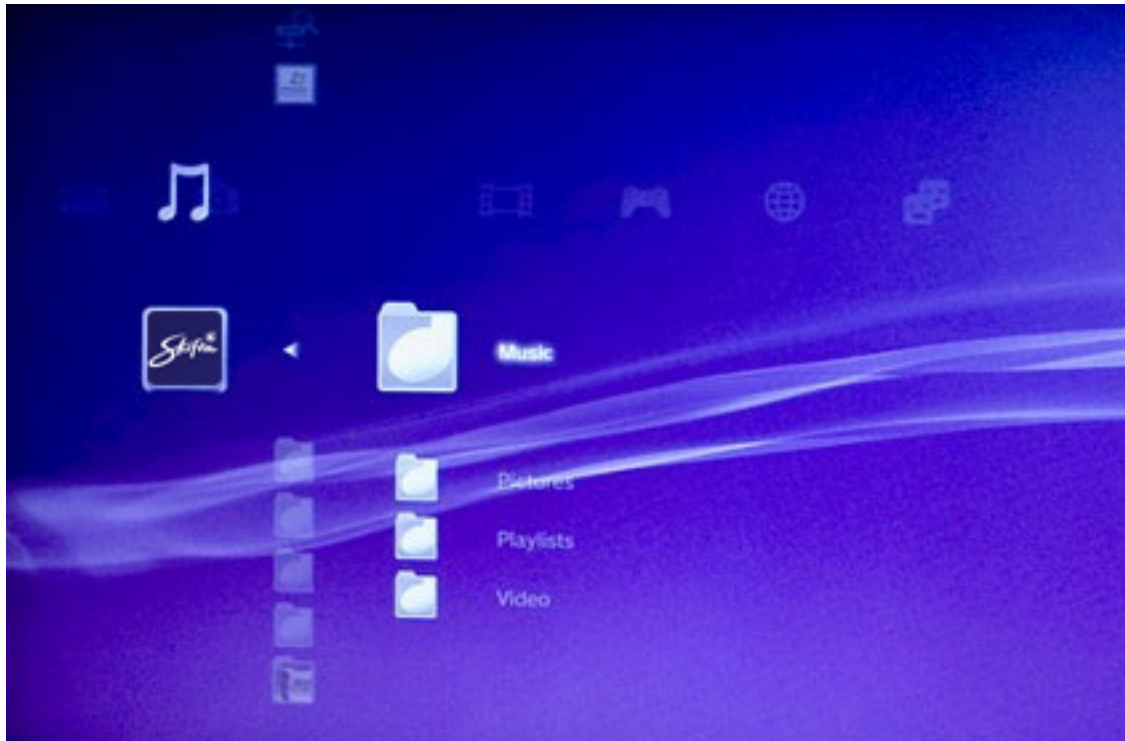
Step 2: Choose a player

Skifta will also automatically discover all of the controllable players on your network. Search for your preferred player, then choose the one you want to continue.



Playing on an unlisted player

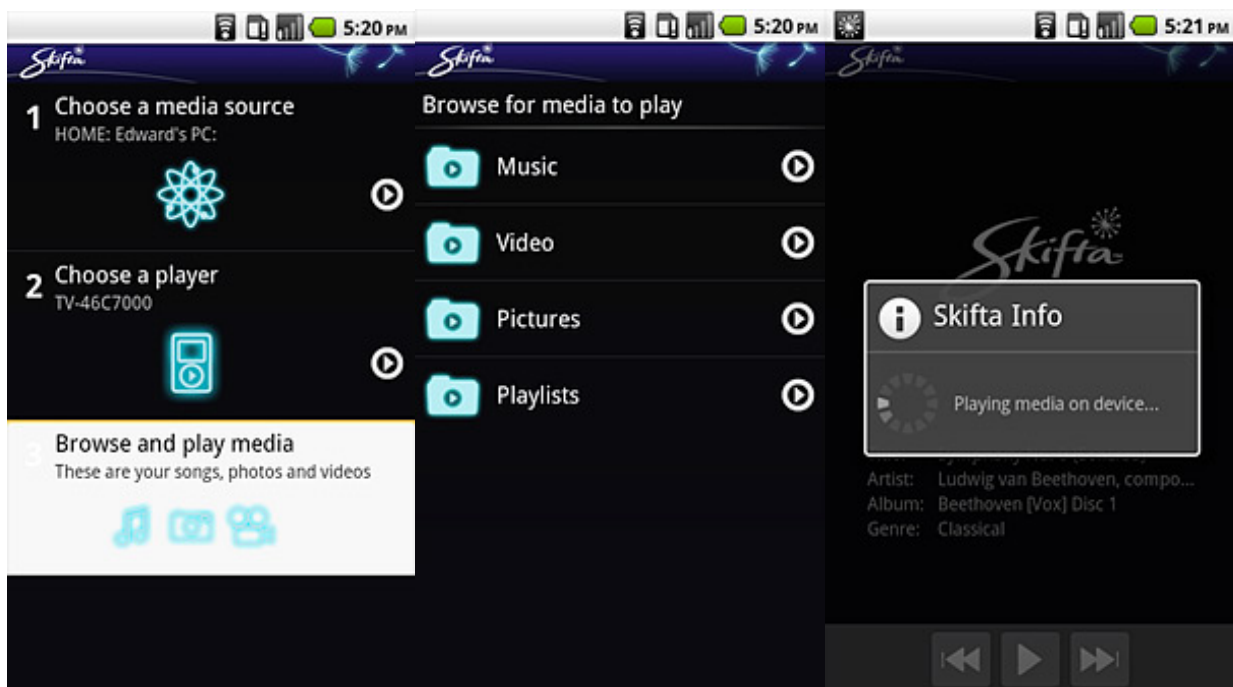
If you have a PS3 or TV that is connected to your network, but does not appear as a player on Skifta. It may be a player that simply does not allow itself to be controlled. Skifta is still bringing media to the network, so pick up the remote control and click 'source' or control paddle and browse the media folders and you should find the Skifta media appear.



Step 3: Browse and Play media

If you have selected a media source and a media player, here is where you can click through the media folders from your source and select files to play on the selected device.

Click on the folders as you like, and when you come to a folder of media you want to play you can long-click (hold your finger down on the device) to play the whole folder or click one particular media file to play one file.

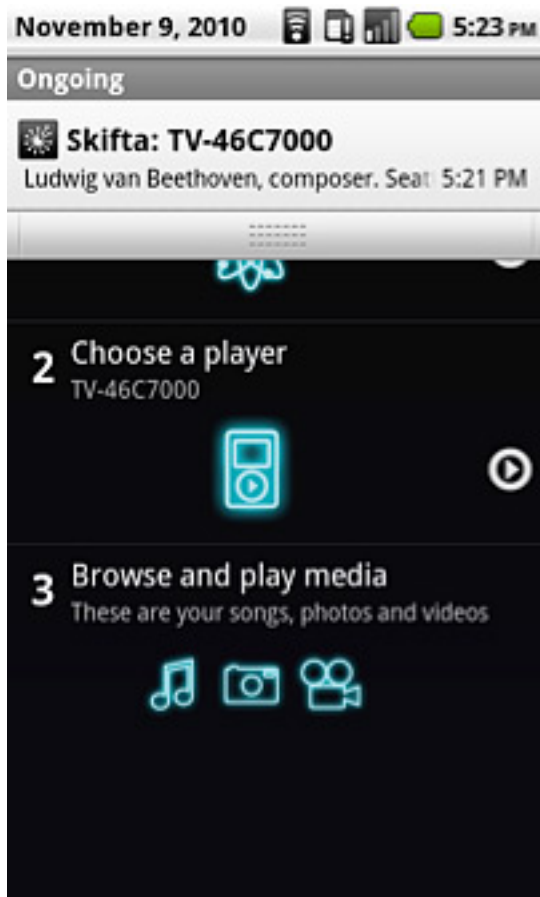


Volume Control

Some DLNA players will allow Skifta to adjust the volume. When you are playing some media, try using the external phone volume control (typically on the side of the device) and see if the player responds.

Now Playing

You can do other things on your phone while media is playing using Skifta. If you want to return to the Skifta player to make a change, simply pull down the notification bar and select the Skifta section. This will return you to the Skifta player screen.



Sign-up with Skifta

To use the more advanced features of Skifta like Channels or remote access to media, you will need to create a free Skifta account. Click on the Channels or Remote tab to create your account. An account will set up instantly. Remember your username and password, as you will need it to set up remote access on your home PC.

The image displays two side-by-side screenshots of the Skifta mobile application interface, showing the sign-up process. Both screenshots feature a top navigation bar with the Skifta logo and three tabs: 'Here', 'Remote', and 'Channels'. The 'Channels' tab is highlighted in purple.

Left Screenshot (Sign-up screen):

- Text: "Sign up for Skifta to access advanced features like channels and remote media access – it's free!"
- Button: "Sign up"
- Text: "Already a user? Please log in:"
- Form: "Username" with input field containing "username"
- Form: "Password" with input field containing "password"
- Buttons: "Log in" and "Cancel"

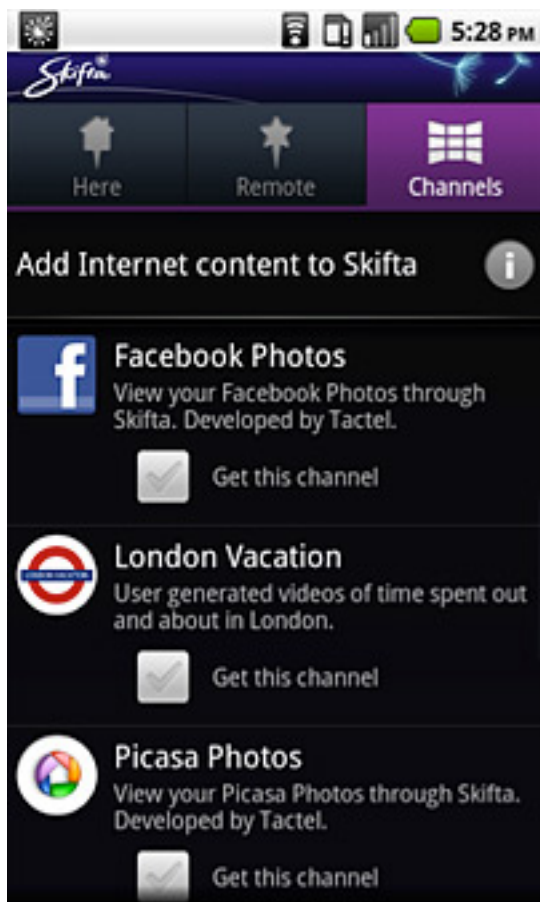
Right Screenshot (Registration form):

- Text: "Please fill in the requested info below. Check out www.skifta.com to learn more. [Privacy policy](#)."
- Form: "Email Address" with input field containing "email address"
- Form: "Username" with input field containing "username"
- Form: "Password" with input field containing "password"
- Form: "Repeat password" with input field containing "password"

Channels

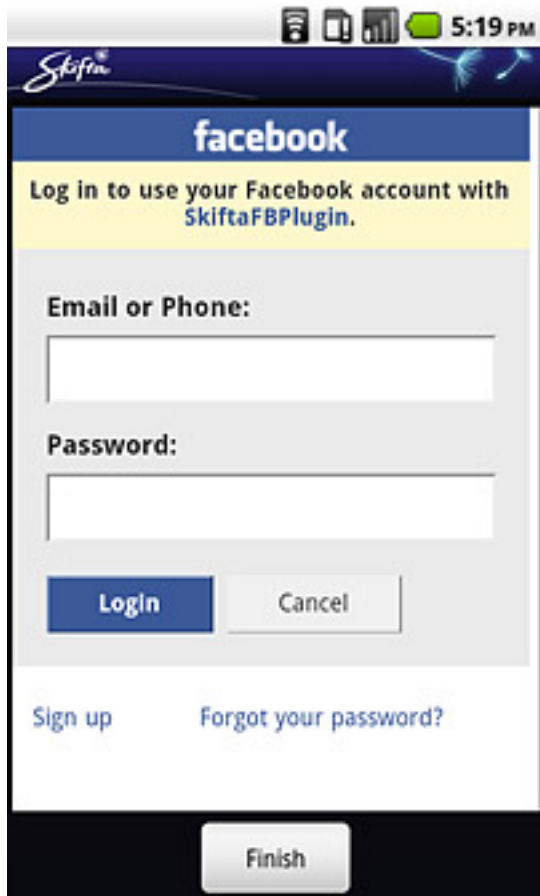
Skifta offers cloud media services in the form of Channels. These Channels appear alongside media from other sources. A Channel is an Internet or cloud service that has been integrated into Skifta so media from that service can be streamed through the phone to the connected electronics in your home.

From the Home screen, click 1: Choose a media source. You will see there are three tabs at the top of the screen. Click on the 'Channels' tab, and after a few seconds, it will load all the available Channels that have been integrated into Skifta. For example you can select the Soma.fm Channel and Soma will be available as a local media source to play to your local connected electronics.



Return to the 'Here' tab select Soma.fm as your media source, select our player and browse and play radio streams from Soma, all controlled by your Skifta phone.

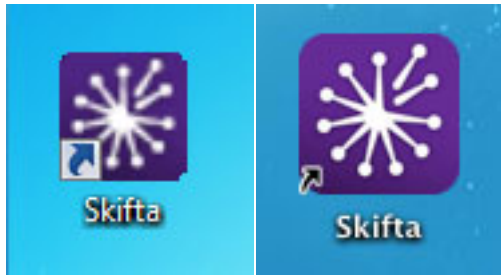
You can also select personalized channels. Select the Facebook Photos Channel, login to access your Facebook account and then click done. Return to the 'Here' tab and photos of you and your friends on Facebook are available for you to browse and play on the connected players.



Remote Media

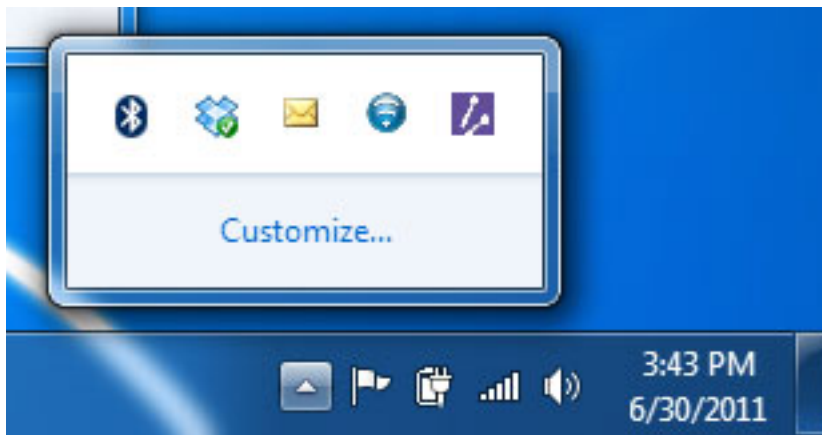
Some of your media may reside on a media source at home such as your PC or a [NETGEAR ReadyNAS Ultra](#). Skifta makes it possible to access this media too.

From your computer at home, visit www.skifta.com/download and download Skifta for your PC or Mac. Once you download and install Skifta, double click the icon on your desktop to start the media server.



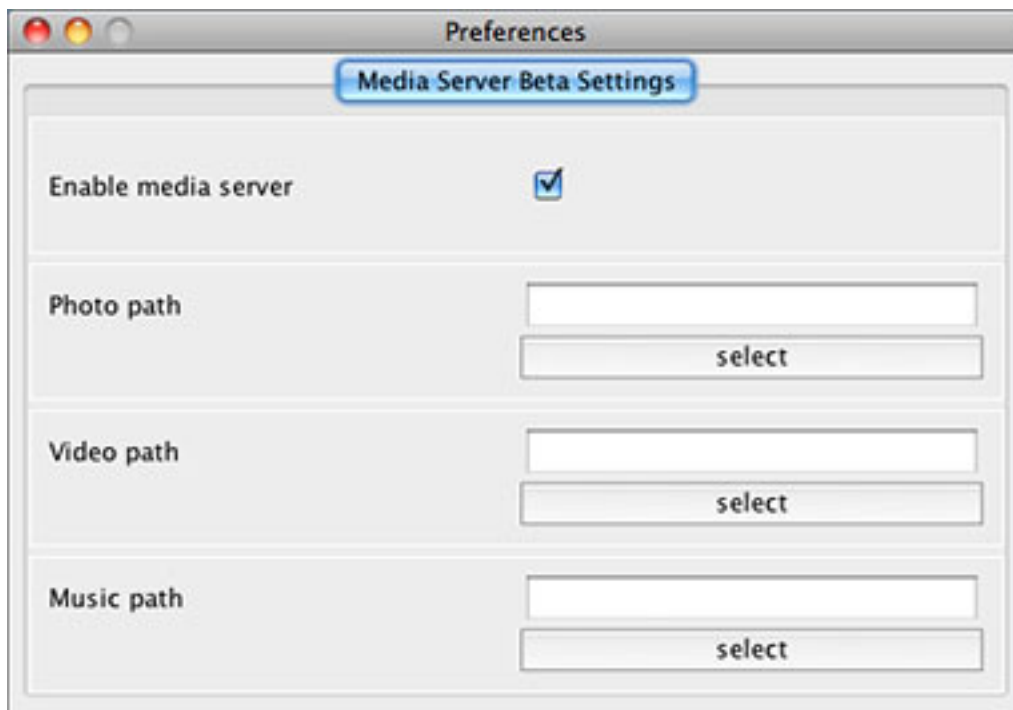
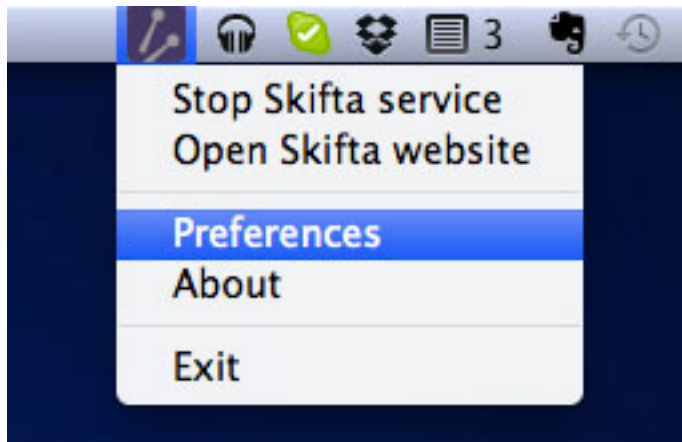
Windows

Once the Skifta media server is running. Click on your windows task bar and right click on the Skifta icon. Select "Preferences" and choose the music, photos and videos folders that contain your media. The media folders you've selected will be available on any DLNA device on your network. Using the Skifta Android app, you can access your selected media from anywhere in the world.



Mac

Once the Skifta media server is running. Click on the Skifta icon in your menu bar. Select "Preferences" and enter your music, photo and video folders that contain your media. The media folders you've selected will be available on any DLNA device on your network. Using the Skifta Android app, you can access your selected media from anywhere in the world.

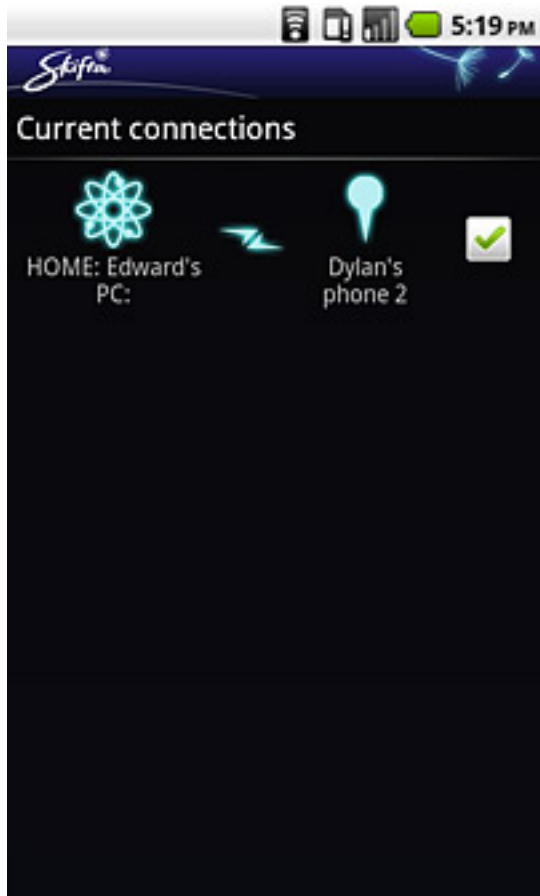


Accessing your remote media

Once the desktop software is installed open your Skifta Android app and click on the 'Remote' tab to see your PC along with any other DLNA sources on your network. Select your remote media source and Skifta will show your home media from anywhere. Take your phone to a friend's home, access your home media use Skifta to play that media on any DLNA device on their network.

Switching off Remote Media

When you no longer need to access your media from home, click on the menu and select 'connections'. Each remote access connection is listed here. Just click to stop the one you wish.



Changing Settings

At any time you can click the menu button in Skifta and select the Settings option. Here you will find a selection of settings to configure your Skifta app.



5:31 PM

Wi-Fi Roaming

Stop Skifta service when changing Wi-Fi networks (to prevent media from being available without your permission).



Privacy settings

Skifta allows media from your phone to be accessed by other devices on the same Wi-Fi network. These settings allow you to control which media types are accessible.

Connections settings

Skifta allows access to remote media sources. These settings control how these sources are accessed.

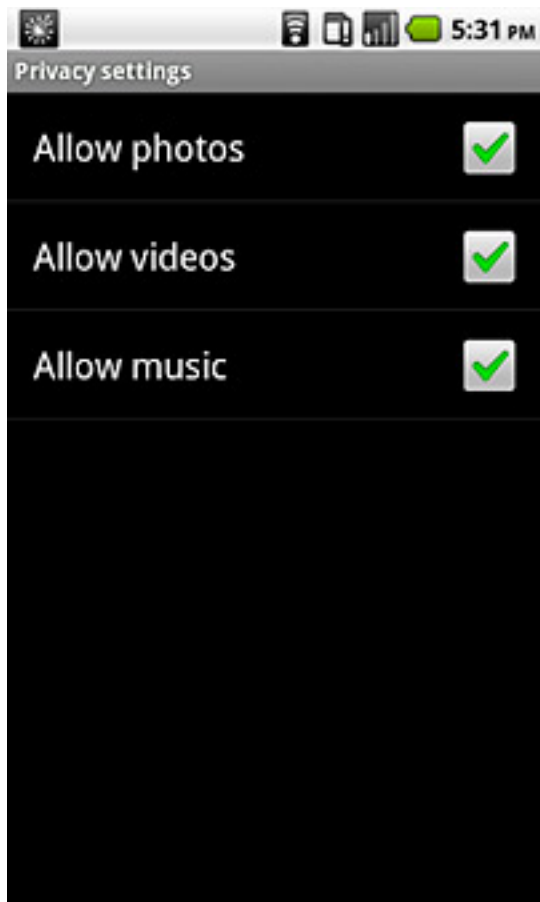
Wi-Fi Roaming

When your phone joins a new network, Skifta will close. This will stop media from being made available on another network until you choose to do so. If you want Skifta to change networks seamlessly, simply uncheck the Wi-Fi roaming checkbox and Skifta will run wherever you are. It may be worth changing your privacy settings when you do this.



Privacy Settings

The Skifta app by default makes your phone media discoverable on a local network. This includes photos, music and videos. If you want to restrict what media is made available simply uncheck the boxes in the privacy settings. By unchecking “Allow photos” you’ll notice that only music and videos will be available when browsing media.



Connection Settings

Skifta tries to be frugal with your phone memory so we let you define how much artwork or how many thumbnails you want to download when browsing media. Check the box if you don't want to show the artwork for media, or select a max number of items you want to display.

